

\$1,250,000 - 150 Portland Avenue 301, Minneapolis

MLS® #6314432

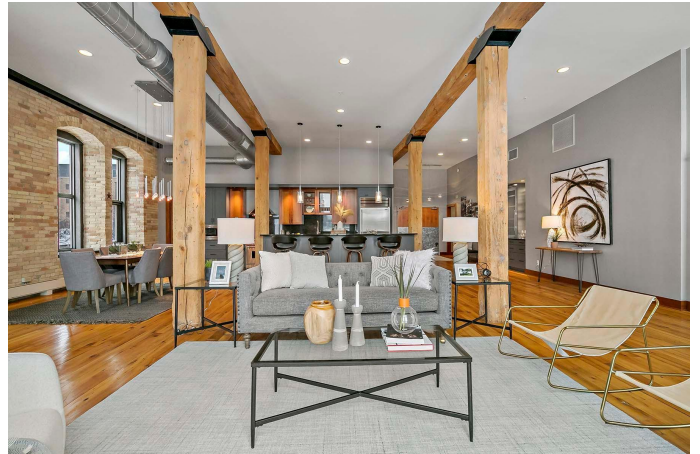
\$1,250,000

2 Bedroom, 2.00 Bathroom, 2,334 sqft

Residential on 0.95 Acres

Cic 1673 Whitney Landmark Residence,
Minneapolis, MN

Welcome to 301 at the Whitney Landmark Residence! This condo features distinctive finishes, beautiful views of the river, Stone Arch Bridge and more. As a corner unit, an extraordinary amount of light fills the home. The open floor plan features a spacious living room area with the first of two balconies, a custom, stunning fireplace, and beautiful river views. The dining space is large and offers opportunities for entertaining large groups. The kitchen is stunning, including Wolf range, bar, and great storage. There's also a storage/laundry room off the kitchen. A custom bar that complements the kitchen was added to the home. Primary bedroom features a private balcony, updated 3/4 bath, and amazing, large closet. There's a second bedroom and full hallway bath. Mudroom with storage and second entry. Two parking spots + storage. Walk to everything in the Mill District including The Guthrie, Gold Medal Park, Mill City Farmer's Market, retail, restaurants & the Stone Arch Bridge.



Built in 1900

Essential Information

MLS® #	6314432
Price	\$1,250,000
Sold Price	\$1,210,000
Bedrooms	2

Bathrooms	2.00
Full Baths	1
Square Footage	2,334
Acres	0.95
Year Built	1900
Type	Residential
Sub-Type	High Rise
Style	High Rise
Status	Closed

Community Information

Address	150 Portland Avenue 301
Area	Downtown West
Subdivision	Cic 1673 Whitney Landmark Residence
City	Minneapolis
County	Hennepin
State	MN
Zip Code	55401

Amenities

Amenities	Elevator(s), Fire Sprinkler System, Lobby Entrance, Security
# of Garages	2
Garages	Assigned, Attached Garage, Garage Door Opener, Heated Garage, Secured, Underground
Waterfront	River View
Pool	None

Interior

Appliances	Dishwasher, Disposal, Dryer, Microwave, Range, Refrigerator, Washer, Wine Cooler
Heating	Forced Air
Cooling	Central Air
Fireplace	Yes
# of Fireplaces	1

Exterior

Construction	Brick/Stone
--------------	-------------

School Information

District Minneapolis

Additional Information

Days on Market 366

Zoning Residential-Single Family

Listing Details

Listing Office Coldwell Banker Realty



The data relating to real estate for sale on this site comes in part from the Broker Reciprocity program of the Regional Multiple Listing Service of Minnesota, Inc. Real Estate listings held by brokerage firms other than Coldwell Banker Realty are marked with the Broker Reciprocity logo or the Broker Reciprocity house icon and detailed information about them includes the names of the listing brokers. Coldwell Banker Realty is not a Multiple Listing Service MLS, nor does it offer MLS access. This website is a service of Coldwell Banker Realty, a broker Participant of the Regional Multiple Listing Service of Minnesota, Inc.

Information deemed reliable but not guaranteed.

Copyright 2024 Regional Multiple Listing Service of Minnesota, Inc. All rights reserved.

By searching, you agree to the EULA Terms Agreement.

Listing information last updated on April 24th, 2024 at 4:32pm CDT

[EULA Terms Agreement](#)